



ADDITIONAL / TO FOLLOW AGENDA ITEMS

This is a supplement to the original agenda and includes reports that are additional to the original agenda or which were marked 'to follow'.

NOTTINGHAM CITY COUNCIL

CHILDREN AND YOUNG PEOPLE SCRUTINY COMMITTEE

Date: Tuesday, 21 March 2017

Time: 11.00 am

Place: Ground Floor Committee Room - Loxley House, Station Street, Nottingham, NG2 3NG

Governance Officer: Rav Kalsi **Direct Dial:**

AGENDA

Pages

- | | | |
|----------|---|--------|
| 4 | OFSTED FRAMEWORK AND THEMATIC INSPECTIONS
Report of the Corporate Director for Strategy and Resources | 3 - 8 |
| 5 | ADOPTION IN NOTTINGHAM
Report of the Corporate Director for Strategy and Resources | 9 - 20 |

This page is intentionally left blank

Children and Young People's Scrutiny Committee

21 March 2017

Ofsted Pilot Inspection of Children's Services

(23/02/17-03/02/17)

Page 3

Agenda Item 4



Cllr David Mellen (Portfolio Holder – Early Years and Early Intervention)
Helen Blackman (Director – Children's Integrated Services)
Sophie Russell (Head of Children's Strategy & Improvement)



Nottingham
City Council

Findings

Inspectors highlighted that:

‘There is strong political and corporate support for children’s services in Nottingham City and this ensures that children’s needs are prioritised. The chief executive, the Director of Children’s Services and the lead member for children’s services have a clear vision, which has resulted in an effective plan to improve services for children and families. Significant progress has been achieved from the Single Inspection Framework inspection in 2014 when Nottingham City was judged to require improvement to be good’.

Page 4

In the pilot inspection framework judgements are received for:

- The impact of leaders on practice with children and families
- The experiences and progress of children who need help and protection
- The experiences and progress of children looked after and care leavers and achieving permanence
- Overall effectiveness



Key areas of positive feedback

- Creation of One Directorate was a catalyst for our improvements
- Regional peer review and challenge well used
- Investment in recruitment of a permanent workforce – becoming an ‘employer of choice’.
- Nottingham City Council is an environment where good and outstanding practice can flourish
- The Council has invested heavily in integrated model for effective partnership working
- Diversity of community is well understood
- Voice of the child is a real strength
- Access to Early Help services results in risks being minimised and welfare improving
- Integrated Locality hubs offer accessible, responsive and effective forum to support multi-agency services

Page 5



Nottingham
City Council

Key areas of positive feedback

- Children's assessments are consistently good which lead to meaningful indicative plans
- Support for disabled children is good with tailored support
- Multi Systemic Therapy/Multi Systemic Therapy Child Abuse and Neglect and Edge of Care Hub are examples of creative use of resources - reducing number of Children in Care
- Social Workers know their children well
- Children live with carers who are ambitious and proud for them
- Children's emotional needs are considered and children are supported by wrap-around services like CAMHS and Targeted Support Team
- Education outcomes are improving
- Early Help is seen as outstanding

Page ●



Nottingham
City Council

Areas for further development

- More robust response for 16-17yr olds who present as homeless
- Being more tenacious to sustain contact and support for care leavers who aren't currently engaged with us
- More understanding of why children go missing and ensuring they receive the help they need
- Review Independent Reviewing Officer capacity
- Multi-agency information to inform shared view about risk and need
- Partners particularly Police and Schools to contribute to initial fact finding/assessments/plans
- Children's Social Care will set clear expectations for responses from partners
- Case file audit arrangements should be strengthened for Children's Social Care

Page 7



Nottingham
City Council

Questions



Children and Young People's Scrutiny Committee

21 March 2017

Adoption



Agenda Item 5

Cllr David Mellen (Portfolio Holder, Early Years and Early Intervention)
Helen Blackman (Director – Children's Integrated Services)
Sonia Cain (Service Manager – Fostering and Adoption)



Nottingham
City Council

Adoption is a process whereby a person assumes the parenting of another, usually a child, from that person's biological or **legal** parent or parents, and, in so doing, permanently transfers all rights and responsibilities, along with filiation, from the biological parent or parents.



The Number of Children Adopted

- There are over 6,000 children across the UK needing adoption every year.
- There are currently 96 children in Nottingham with a plan of adoption.

Page 11

2016 / 2017 - 48

2015 / 2016 - 43

2014 / 2015 - 70

2013 / 2014 - 42

2012 / 2013 - 38

2011 / 2012 - 33



Steps to Adoption

1. Initial enquiry
2. Home Visit
3. Assessment
4. Matching
5. Post Adoption Order

Page 12



Nottingham
City Council

Support for Adoptive Parents

1. Training programme
2. The matching process
3. Financial Support
4. Educational Support
5. Post Order Support
6. Adoption Support Advisor

Page 13



Nottingham
City Council

Outcomes for Adoption

- Outcomes for children are positive in terms of the number of children achieving adoptive homes. For the three years prior to and including the 2014-15 financial year, we were able to secure permanency through adoption for 153 children, with the majority (59%) of children adopted, falling into one or more of four hard to place categories.

LOOKED AFTER CHILDREN PERFORMANCE TABLES - ADOPTION 1
 The percentage of looked after children who ceased to be looked after who were adopted
 Latest data 2015
 A high percentage represents high performance

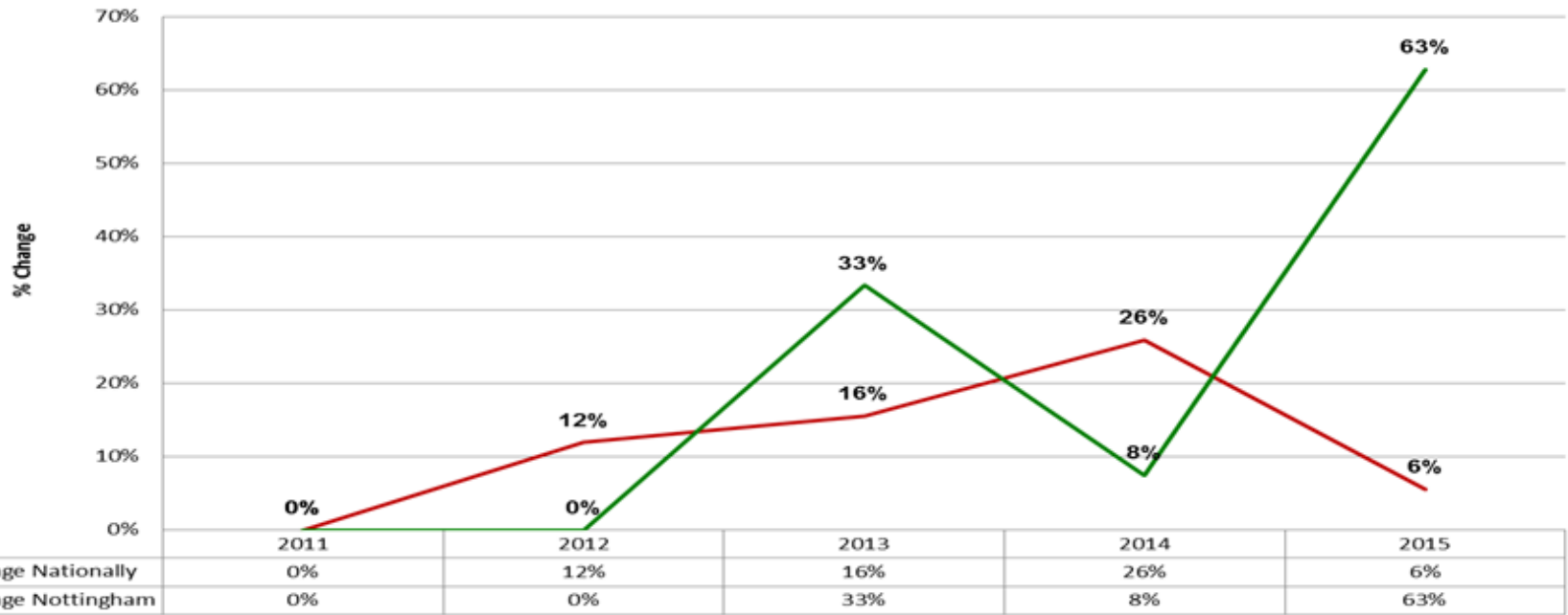
Rank	LA Code	LA Name	Indicator value for the 3 year average in 2013, 2014 and 2015 (%)	Percentage of looked after children adopted during the year					Number of looked after children adopted during the year				
				2011	2012	2013	2014	2015	2011	2012	2013	2014	2015
		970 ENGLAND	16	11	13	14	17	17	3,100	3,470	4,010	5,050	5,330
30	892	Nottingham	20	12	13	17	17	25	30	30	40	43	70

Source: S SDA 003



Outcomes for Adoption

The percentage change: looked after children who ceased to be looked after who were adopted year on year



Outcomes for Adoption

- Of the adoptions in the current year, 23 (64%) were for 'hard to place' children:

	Adoptions 2012-13	Adoptions 2013-14	Adoptions 2014-15	Adoptions 16/17 [To date]
	Entered Care - PFA	Entered Care - PFA	Entered Care - PFA	Entered Care - PFA
Target timescale (days)	609	547	487	426
All children	663	603	703	592
Not Hard to place	535	535	456	467
Hard to place	779	652	846	663
	Placement Order - Match	Placement Order - Match	Placement Order - Match	Placement Order - Match
Target timescale (days)	182	152	121	121
All children	249	286	387	320
Not Hard to place	167	284	206	230
Hard to place	323	288	503	370

What Ofsted said...

- Adoption is considered for all children, where appropriate, and is achieved for brothers and sisters, those who are older and for children with complex needs.
- Adopters and special guardians are comprehensively assessed and they receive appropriate support that is sensitive to their needs and the complexities of the children they care for.
- Children looked after live in stable and secure homes where they are supported to live full and enjoyable lives.
- Very careful consideration is given to children living with carers who can meet their needs. Robust quality assurance is in place to oversee and ensure the quality of both local authority placements and purchased placements.



East Midland Regional Adoption Agency 2020

- In June 2015 the government indicated its intention to reshape adoption provision into ‘Regional Adoption Agencies’ and sought expressions of interest from local authorities.
- The rationale was that there are currently too many adoption agencies operating. The view was that this fragmented system was leading in delays in placing children.
- The DCS's of the East Midlands agreed to work collaboratively and are due to commence a pilot.

Page 18



Nottingham
City Council

Challenges

- Adoption Recruitment.
- Adoption Support Grant
- Timescales for Adoption.
- Legal Challenges.
- Change to interagency funding will create some pressure.

Questions

